



The Parent Information Center of Delaware

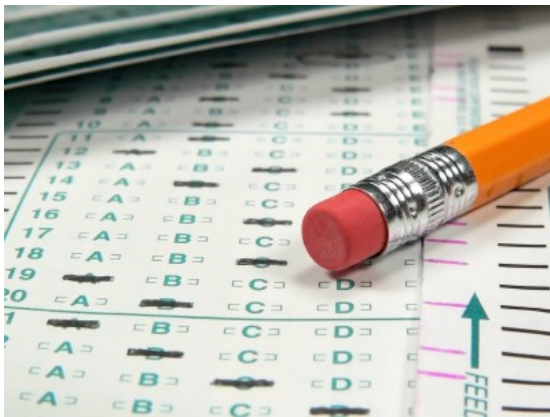
Inform. Educate. Advocate.

Testing Accommodations for Students with Disabilities

AT A GLANCE

Students with disabilities may be eligible for school and district testing accommodations, as well as accommodations on the state assessment. Unless a student's IEP team determines that a given assessment is not appropriate for the student, IDEA allows children with disabilities to participate in statewide assessments with accommodations, (in Delaware, the state assessment is Smarter Balanced). Accommodations in both the classroom setting and in statewide assessments settings tend to fall into several types of categories, including but not limited to: Presentation, Setting, Response, and Timing/Scheduling .

EXAMPLES OF TESTING ACCOMMODATIONS:



Presentation accommodations:

Large print
Magnification devices
Sign language
Audio tape

Setting accommodations:

Reducing distractions to student
Changing setting where test is taken

Response Accommodations:

Use of Scribe
Calculator
Spelling and grammar devices
Tape recorder

Time/Scheduling:

Extended time
Frequent breaks

If participating in such an assessment is appropriate for a specific child with a disability, then that child's IEP Team must include in the IEP any individual accommodations the child will need during testing. Some children may not need accommodations. However, it is important for IEP teams to know what type of accommodations can be made without invalidating a child's test scores and which accommodations the state permits. (CPIR, 2010)

For more information visit www.picofdel.org or call (302) 999-7394



PIC is a statewide non-profit organization with a mission to advance effective parent engagement in education.



Testing Accommodations for Standardized School Testing

Smarter Balanced, the statewide assessment used in Delaware to measure a student's understanding of grade level content, has many built-in universal tools available to all students. (*Understood*, 2017)

Some tools include:

- Looking up the meaning of words with a dictionary or glossary
- Spell check
- Taking notes on a digital notepad
- Making text larger or smaller
- Repeating instructions
- Highlighting and shading text
- Crossing out answers on multiple choice questions
- Hiding text

The tests also have built-in accommodations for students with disabilities.

Here are some of the available features:

- Read aloud or [text-to-speech](#)
[Speech-to-text dictation](#)
- Masking, which lets students cover or hide text
- Color and contrast control
- Braille
- American Sign Language



For more information visit www.picofdel.org or call (302) 999-7394



PIC is a statewide non-profit organization with a mission to advance effective parent engagement in education.



The Parent Information Center of Delaware

Inform. Educate. Advocate.

TESTING ACCOMMODATIONS FOR STANDARDIZED TESTS

Accommodations may be available for students taking the SAT/ACT, Subject Tests, PSAT or AP exams. Accommodations must be pre-approved by The College Board, which considers all reasonable requests for accommodations needed by students with disabilities. **Some typical accommodations include:**

Extended time	Large block answer sheet	Large print
Computer use for essays	Small group setting	Reader for test
Extra and extended breaks	Private room	Colored overlays
Reading and vision accommodations	Wheelchair accessibility	Tape recorder
Calculator	Use of auditory/amplification system	Computer without spell-check
		Recording answers in test booklet

Students with documented disabilities may be eligible for accommodations, however these accommodations must be pre-approved by the College Board's Services for Students with Disabilities Services (SSD). Per the College Board, students who meet the criteria below are typically approved.

- **Student has a documented disability**
- **Participation in college board exam is impacted**
- **Requested accommodation is needed**
- **Accommodation is received on school tests**



For more information about SAT testing accommodations and how to apply, visit:

<https://www.collegeboard.org/students-with-disabilities> or contact us at (302) 999-7394 to speak with PIC's Transition Coordinator.



For more information visit www.picofdel.org or call (302) 999-7394



PIC is a statewide non-profit organization with a mission to advance effective parent engagement in education.